

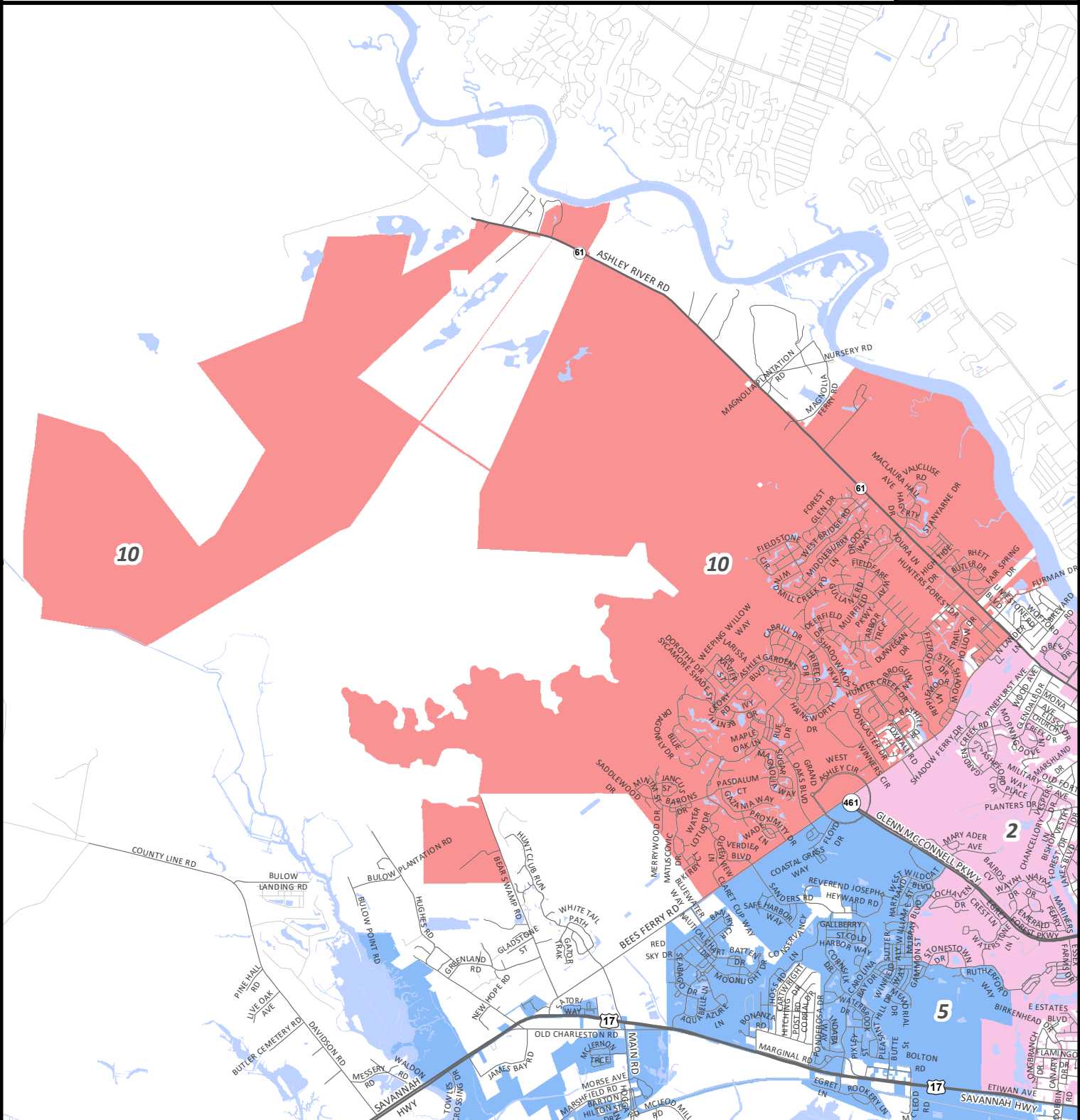
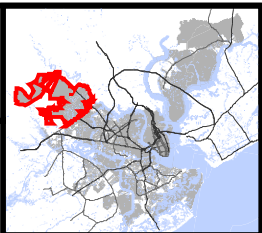
# November 2023 City Council District D10

To be used for the November 2023 election and become active in January 2024

For more detailed and most up to date information, go to the Mapnet interactive web map at <https://gis.charleston-sc.gov>

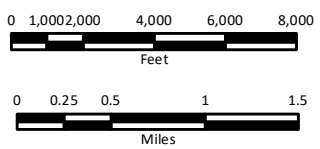
- Highways
- Streets
- CDC Streets
- Water features
- Other areas in the City of Charleston

- November 2023 City Council Districts**
- D1
  - D2
  - D3
  - D4
  - D5
  - D6
  - D7
  - D8
  - D9
  - D10
  - D11
  - D12



City of Charleston  
 Department of Information Technology  
 GIS Division  
 2 George St, Suite 2800  
 Charleston, SC 29401  
[www.charleston-sc.gov](http://www.charleston-sc.gov)

© Copyright 2023 City of Charleston  
 All Rights Reserved



**Important Disclaimer Notice**  
 The City of Charleston makes no warranty, representation, or guaranty as to the content, sequence, accuracy, timeliness, or completeness of any information provided herein or derived from the mapping data for any reason. The City of Charleston explicitly disclaims any representations and warranties, including, without limitation, the implied warranties of merchantability and fitness for a particular purpose. The user knowingly waives any and all claims for damages against any and all of the entities comprising the City of Charleston that may arise from the mapping data.



Map created 4/3/2023