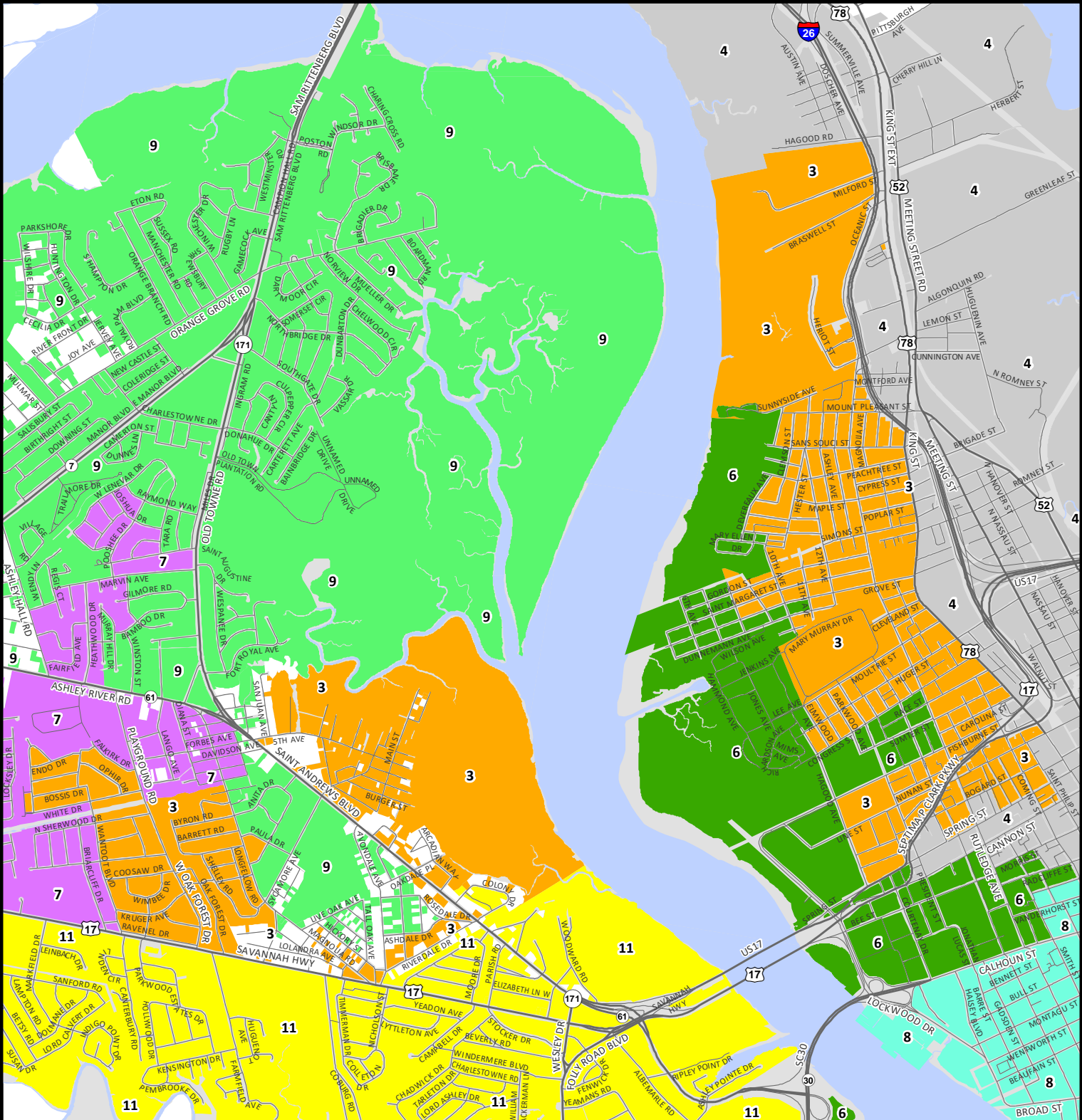
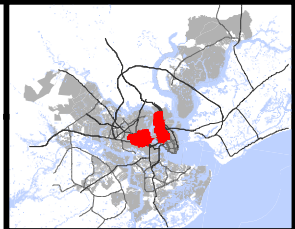


City Council District 3

City of Charleston

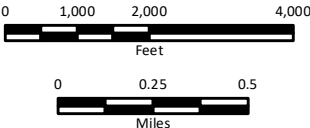
For more detailed and most up to date information, go to the Mapnet interactive web map at <http://gis.charleston-sc.gov>

- Highways
 - Streets
 - Charleston County Streets
 - Water features
 - Other areas in the City of Charleston
- | | |
|------------------------|----|
| City Council Districts | 7 |
| 1 | 8 |
| 2 | 9 |
| 3 | 10 |
| 4 | 11 |
| 5 | 12 |
| 6 | |



City of Charleston
 Department of Information Technology
 GIS Division
 2 George St, Suite 2800
 Charleston, SC 29401
www.charleston-sc.gov

© Copyright 2019 City of Charleston
 All Rights Reserved



Important Disclaimer Notice
 The City of Charleston makes no warranty, representation, or guaranty as to the content, sequence, accuracy, timeliness, or completeness of any information provided herein or derived from the mapping data for any reason. The City of Charleston explicitly disclaims any representations and warranties, including, without limitation, the implied warranties of merchantability and fitness for a particular purpose. The user knowingly waives any and all claims for damages against any and all of the entities comprising the City of Charleston that may arise from the mapping data.



Map created 9/24/2019