

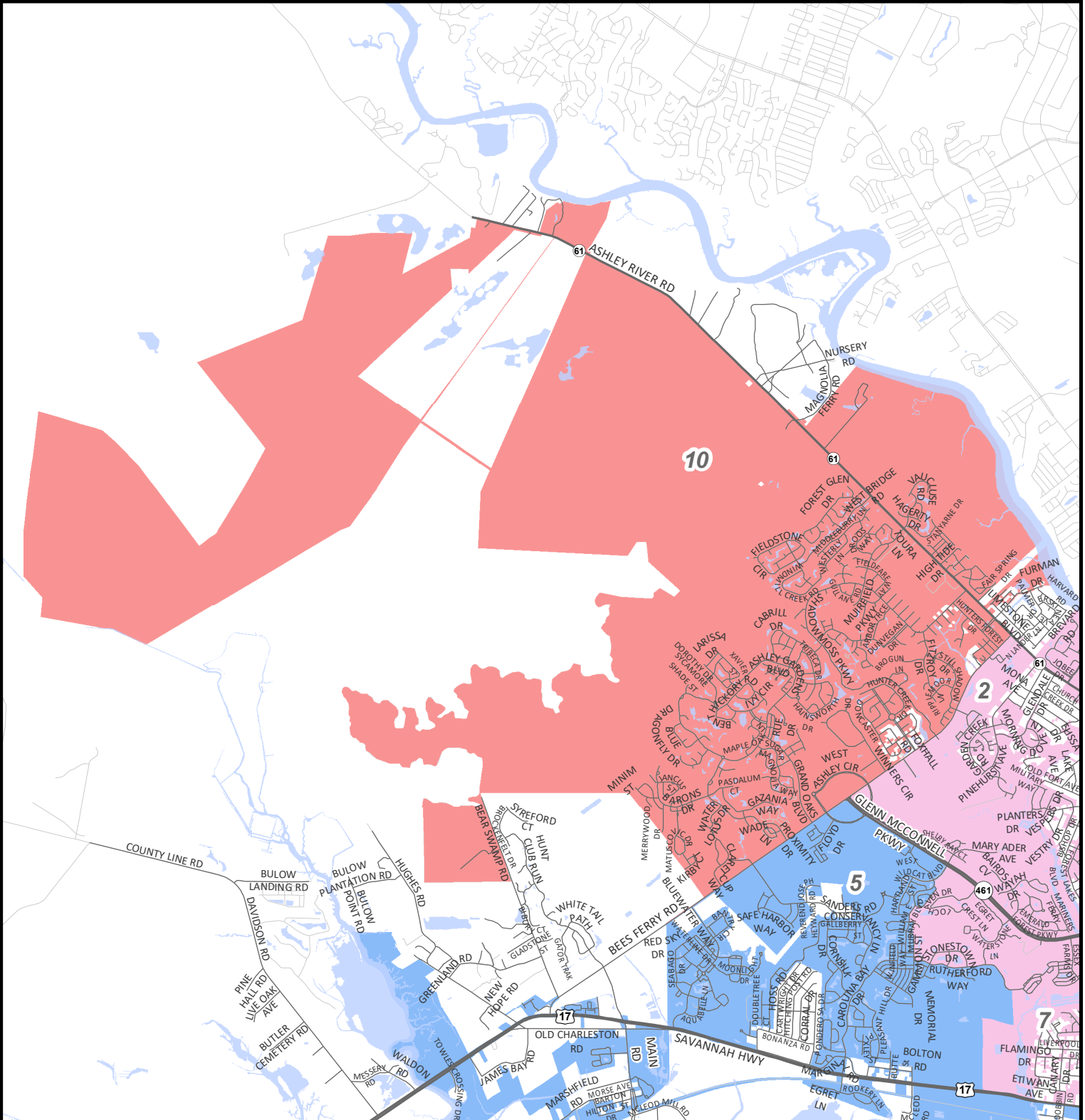
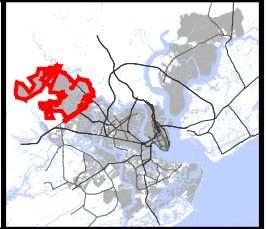
City Council District D10

City of Charleston

For more detailed and most up to date information, go to the Mapnet interactive web map at <https://gis.charleston-sc.gov>

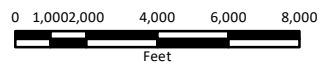
- Highways
- Streets
- CDC Streets
- Water features
- Other areas in the City of Charleston

- 1 - Boyd Gregg
- 2 - Kevin Shealy
- 3 - Jim McBride
- 4 - Robert M. Mitchell
- 5 - Karl L. Brady, Jr.
- 6 - William Dudley Gregorie
- 7 - Perry K. Waring
- 8 - Michael S. Seekings
- 9 - William P. Tinkler
- 10 - Stephen Bowden
- 11 - Ross A. Appel
- 12 - Caroline Parker



City of Charleston
 Department of Information Technology
 GIS Division
 2 George St, Suite 2800
 Charleston, SC 29401
www.charleston-sc.gov

© Copyright 2024 City of Charleston
 All Rights Reserved



Important Disclaimer Notice

The City of Charleston makes no warranty, representation, or guaranty as to the content, sequence, accuracy, timeliness, or completeness of any information provided herein or derived from the mapping data for any reason. The City of Charleston explicitly disclaims any representations and warranties, including, without limitation, the implied warranties of merchantability and fitness for a particular purpose. The user knowingly waives any and all claims for damages against any and all of the entities comprising the City of Charleston that may arise from the mapping data.



Map created 2/15/2024